

Uptown Westerville Cityscape Mural

Hanby Arts Magnet School, Westerville, 2005/2006

Hyla Skudder -- Artist-in-Residence



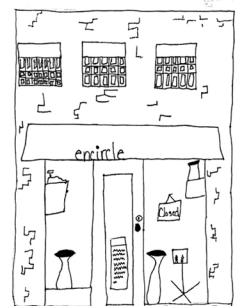
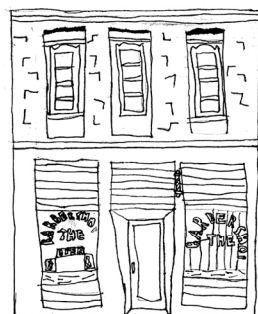
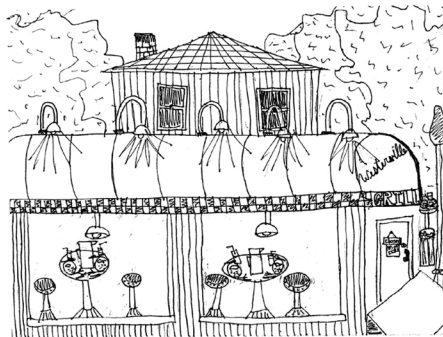
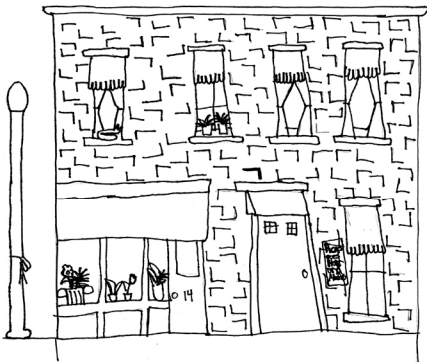
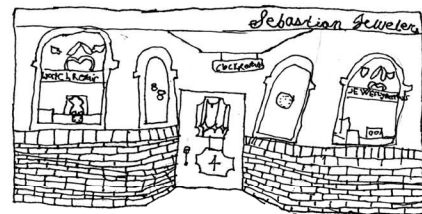
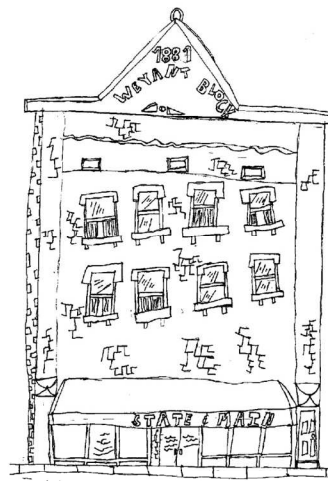
Mrs. Skudder supervises students drawing buildings from photographs in the Hanby school library.

In this project 3rd - 5th grade students painted a mural in the main school hallway depicting the buildings on their main city street. Some drawings were done from life (the principal took small groups outside to draw buildings directly) and some were drawn in small group sessions from photographs. Students also drew cars & trucks, pedestrians & shoppers, trees, street lamps, and window interiors to give the mural life and personality.

Students took turns painting during their recess breaks in small supervised groups.



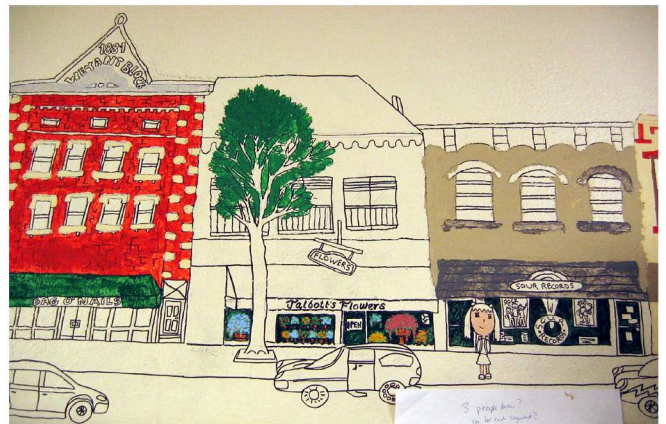
Site of mural above the lockers in the main hallway.



Student drawings of Uptown Westerville Buildings



The student's drawings were photo copied onto acetates and projected onto the wall, and finally traced again with permanent black markers.



The wall above the locker bay became one long giant coloring book!



Hanby Arts Magnet School
Hyla Skudder—Artist-in-Residence
2005/2006

